

Statement of Values & School Philosophy

Background

Huntingdale Primary School is a Japanese bilingual primary school, focusing on educating and enriching the lives of children through the benefits of learning a language. It has been operating for over 60 years and has run a successful Japanese bilingual program for over 20 years. The school is located close to the proximity of South Oakleigh College and Monash University.

Purpose

The purpose of this policy is to outline the values of our school community and explain the vision, mission and objectives of our school.

Implementation

Huntingdale Primary School is committed to providing a safe, supportive and inclusive environment for all students, staff and members of our community. Our school recognises the importance of the partnership between our school and parents and carers to support student learning, engagement and wellbeing. We share a commitment to, and a responsibility for, creating an inclusive and safe school environment for our students.

The programs and teaching at Huntingdale Primary School support and promote the principles and practice of Australian democracy, including a commitment to:

- Elected government
- The rule of law
- Equal rights for all before the law
- Freedom of religion
- Freedom of speech and association
- The values of openness and tolerance.

This policy outlines our school's vision, mission, objective, values and expectations of our school community. This policy is available on our school website.

To celebrate and embed our Statement of Values and Philosophy in our school community, we:

- Display posters and banners that promote our values in our school
- Celebrate our values in our school newsletter
- Provide awards and recognition for students who actively demonstrate the values
- Discuss our values with students in the classroom, meetings and assemblies.

Engaging Minds Together



Vision

Our vision is to be a lighthouse school for language acquisition through providing a quality Japanese-English bilingual education for Primary School aged children in Victoria- **Engaging Minds Together**.

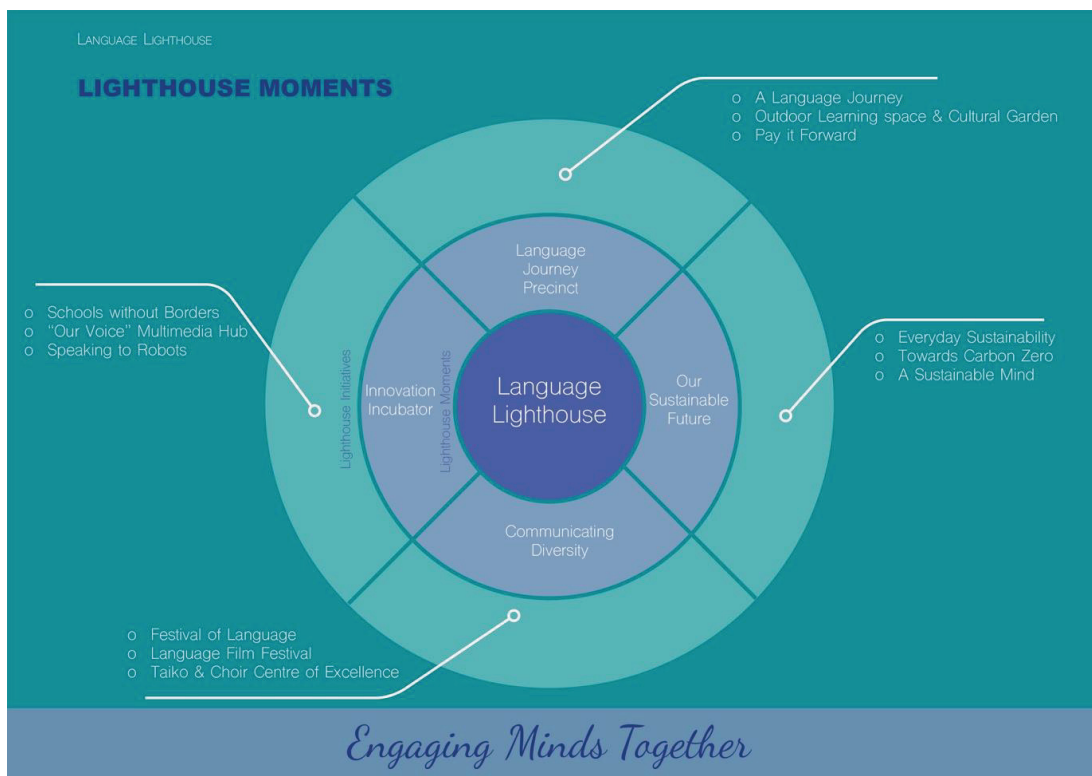
'Engaging' children each and every day in a safe and secure environment is a key focus. We know that without children feeling safe they are unable to engage fully with their learning. The key to engagement is curiosity and creativity and these are key elements in the children's explorations and learnings each day at school.

'Minds' are what benefit from our unique bilingual program. Without the Japanese program there is a monolingual program but without the English program there is also a monolingual program. The academic rigour and the power of how we work at Huntingdale is in the careful curriculum planning that underpins the program as one whole. The neuroscience that lies behind our wellbeing and academic programs and the benefits of our bilingual program bring together the 'mind' element.

'Together' we achieve more. The children in isolation will explore but require guidance and scaffolding to excel. The children with a teacher achieve more through a gradual release of responsibility stemming from modelling through to independent application in a real life setting. The children, teacher, parents and families however are what truly achieve the greatest outcomes.

When these three powerful words come together we have a way of working whilst also explaining why we all call Huntingdale 'our school'.

In its vision of becoming a 'Lighthouse School for Language', we will draw on our school resources and connect with the wider the community to fulfil this vision.





Mission

Supported in a cohesive and protective community, Huntingdale Primary School's **mission** is to guide students in an intelligent and orderly fashion to reach their potential. A forward thinking and global school for aspirational families where new horizons are presented and explored and where students are provided with an early education built on solid foundations for future excellence. Bold, brave and inquisitive, the cohesive community of Huntingdale Primary School encourages students to think outside the box, to challenge the status quo and explore new ideas.

Huntingdale Primary School is a vibrant place that encourages learning, laughter and play in a friendly and warm environment. We understand the importance of providing a safe environment for everyone and have a zero tolerance approach to child abuse.

Objective

Example School's objective is to ensure all students leave our school with a practical understanding of the Victorian Curriculum and to provide the solid foundations to continue their school education.

Values

Our core School Values encompass the learning at Huntingdale Primary School. It is central to the life at our school and students, teachers and parents are asked to demonstrate these:

Kindness- The quality of being warm-hearted, considerate, humane and sympathetic. The notion of 'treating others as you would like them to treat you'.

Courage- The quality of spirit that enables you to be brave and face challenging situations without showing fear.

Personal Best- The quality of putting in your best personal effort into all that you do and not having the focus on 'beating others'.

Creativity-The quality of showing creativity attributes and thinking in a range of contexts.

Kindness Courage Personal Best Creativity



Behavioural Expectations

Huntingdale Primary School acknowledges that the behaviour of staff, parents, carers and students has an impact on our school community and culture. We acknowledge a shared responsibility to create a positive learning environment for the children and young people at our school.

As Principal and school leaders, we will:

- Model positive behaviour and effective leadership
- Communicate politely and respectfully with all members of the school community
- Work collaboratively to create a school environment where respectful and safe behaviour is expected of everyone.
- Behave in a manner consistent with the standards of our profession and meet core responsibilities to provide safe and inclusive environments,
- Plan, implement and review our work to ensure the care, safety, security and general wellbeing of all students at school.
- Identify and support students who are or may be at risk.
- Do our best to ensure every child achieves their personal and learning potential.
- Work with parents to understand their child's needs and, where necessary, adapt the learning environment accordingly.
- Respond appropriately when safe and inclusive behaviour is not demonstrated and implement appropriate interventions and sanctions when required.
- Inform parents of the school's communication and complaints procedures.
- Ask any person who is acting in an offensive, intimidating or otherwise inappropriate way to leave the school grounds.

As teachers and non-teaching school staff, we will:

- Model positive behaviour to students consistent with the standards of our profession.
- Communicate politely and respectfully with all members of the school community.
- Proactively engage with parents about student outcomes.
- Work with parents to understand the needs of each student and, where necessary, adapt the learning environment accordingly.
- Work collaboratively with parents to improve learning and wellbeing outcomes for students with additional needs.
- Communicate with the Principal and school leaders in the event we anticipate or face any tension or challenging behaviours from parents.
- Treat all members of the school community with respect.

As parents and carers, we will:

- Model positive behaviour to our child
- Communicate politely and respectfully with all members of the school community
- Ensure our child attends school on time, every day the school is open for instruction
- Take an interest in our child's school and learning
- Work with the school to achieve the best outcomes for our child
- Communicate constructively with the school and use expected processes and protocols when raising concerns
- Support school staff to maintain a safe learning environment for all students
- Follow the school's processes for communication with staff and making complaints
- Treat all school leaders, staff, students, and other members of the school community with respect.



As students, we will:

- Model positive behaviour to other students
- Communicate politely and respectfully with all members of the school community.
- Comply with and model school values
- Behave in a safe and responsible manner
- Respect ourselves, other members of the school community and the school environment.
- Actively participate in school
- Not disrupt the learning of others and make the most of our educational opportunities.

As community members, we will:

- Model positive behaviour to the school community
- Treat other members of the school community with respect
- Support school staff to maintain a safe and inclusive learning environment for all students
- Utilise the school's processes for communication with staff and submitting complaints.

Unreasonable Behaviours

Schools are not public places, and the Principal has the right to permit or deny entry to school grounds (for more information, see our *Visitors Policy*).

Unreasonable behaviour that is demonstrated by school staff, parents, carers, students or members of our school community will not be tolerated at school, or during school activities.

Unreasonable behaviour includes:

- Speaking or behaving in a rude, manipulative, aggressive or threatening way, either in person, via electronic communication or social media, or over the telephone
- The use or threat of violence of any kind, including physically intimidating behaviour such as aggressive hand gestures or invading another person's personal space
- Sending demanding, rude, confronting or threatening letters, emails or text messages
- Sexist, racist, homophobic, transphobic or derogatory comments
- The use of social media or public forums to make inappropriate or threatening remarks about the school, staff or students.

Harassment, bullying, violence, aggression, threatening behaviour and unlawful discrimination are unacceptable and will not be tolerated at our school.

Unreasonable behaviour and/or failure to uphold the principles of this *Statement of Values and School Philosophy* may lead to further investigation and the implementation of appropriate consequences by the school Principal.

At the Principal's discretion, unreasonable behaviour may be managed by:

- Requesting that the parties attend a mediation or counselling sessions
- Implementing specific communication protocols
- Written warnings
- Conditions of entry to school grounds or school activities
- Exclusion from school grounds or attendance at school activities
- Reports to Victoria Police
- Legal action



Inappropriate student behaviour will be managed in accordance with our school's *Student Engagement Policy*.

Our *Statement of Values and School Philosophy* ensures that everyone in our school community will be treated with fairness and respect. In turn, we will strive to create a school that is inclusive and safe, where everyone is empowered to participate and learn.

Further Information and Resources

This policy works in conjunction with the following policies:

- Student Engagement
- Respect for School Staff
- Code of Conduct
- Visitors
- Community Involvement
- Equal Opportunity
- Inclusion and Diversity
- International Students

Evaluation

This policy will be reviewed annually or as needed to comply with DET policy changes.

Certification

Reviewed	School Council Ratification	Next Review
22 October 2019- Education & Future Directions sub-committee	12 November 2019	October 2021