

<b>Curriculum Contributions - items and activities that students use, or participate in, to access the Curriculum</b>	<b>Amount</b>
<p><i>Classroom consumables, materials &amp; equipment</i></p> <ul style="list-style-type: none"> <li>• <i>Art – paint, crayons, canvas, glitter, coloured paper- \$35</i></li> <li>• <i>Science – chemicals- \$28</i></li> <li>• <i>English – book boxes- \$18</i></li> <li>• <i>Sports – equipment- \$22</i></li> <li>• <i>Bilingual Resources- Hiragana, Katakana and Kanji charts, class libraries- \$35</i></li> <li>• <i>Stationery items – for example pens, pencils, exercise books- \$100</i></li> <li>• <i>Student Diary-\$12</i></li> </ul>	\$250
<p><i>Online subscriptions</i></p> <ul style="list-style-type: none"> <li>• <i>Essential Assessment- \$16, Mathletics- \$25, See-Saw- \$11, PAT- \$5</i></li> </ul>	\$60
<i>ICT devices – provision of devices from the shared classroom sets</i>	\$25
<i>Printing and photocopying of worksheets and learning materials</i>	\$25
<b>Total Curriculum Contributions</b>	<b>\$360</b>

<b>Other Contributions - for non-curriculum items and activities</b>	
<i>Bilingual Donation</i>	\$65
<i>Information Technology Donation</i>	\$65
<i>School grounds maintenance and improvements</i>	\$55
<i>STEM</i>	\$55
<b>Total Other Contributions</b>	<b>\$240</b>

<b>Tax deductible contributions</b>	
<b>Building fund-</b> <i>A tax-deductible contribution to support renovations, upgrades, and maintenance of school infrastructure (suggested amounts)</i>	\$100 or \$50 or \$20
<b>Library fund-</b> <i>A tax-deductible contribution to support book purchases and other equipment that sustain the library as a valuable resource (suggested amounts)</i>	\$100 or \$50 or \$20

### **Extra-Curricular Items and Activities**

Huntingdale Primary School offers a range of items and activities that enhance or broaden the schooling experience of students and are above and beyond what the school provides in order to deliver the curriculum. These are provided on a user-pays basis. The cost of these will be advised during the school year to the relevant year levels. This includes activities such as 3-6 camp, excursions, incursions, interschool sport, graduation and swimming.

### **Financial Support for Families**

Huntingdale Primary School understands that some families may experience financial difficulty and offers a range of support options, including the:

- *Camps, Sports and Excursions Fund (contact the school)*
- *State School Relief (contact the school)*
- *MoneySmart.gov.au <https://moneysmart.gov.au/managing-debt/urgent-help-with-money>*
- *Services Australia <https://www.servicesaustralia.gov.au/individuals/subjects/crisis-and-special-help>*
- *Salvation Army Financial Assistance <https://www.salvationarmy.org.au/need-help/financial-assistance/>*

For a confidential discussion about accessing these services, or if you would like to discuss alternative payment arrangements, contact:

Natalie Kerassitis - Business Manager

**Ph:** 03 9544 2318 | **Email:** natalie.kerassitis@education.vic.gov.au

### **Refunds**

Parent requests for refunds are subject to the discretion of the school and made on a case-by-case basis. Refunds will be provided where the school deems it is reasonable and fair to do so, taking into consideration whether a cost has been incurred, the Department's Parent Payments Policy and Guidance, Financial Help for Families Policy, and our school Refund Policy.

# PARENT PAYMENTS POLICY

## ONE PAGE OVERVIEW



### FREE INSTRUCTION

- Schools provide students with free instruction and ensure students have free access to all items, activities and services that are used by the school to fulfil the requirements of the Curriculum. This includes the Victorian Curriculum F-10, the Victorian Certificate of Education (VCE) including the VCE Vocational Major and the Victorian Pathways Certificate.
- Schools may invite parents to make a financial contribution to support the school.



### PARENT PAYMENT REQUESTS

Schools can request contributions from parents under three categories:

#### Curriculum Contributions

Voluntary financial contributions for curriculum items and activities which the school deems necessary for students to learn the Curriculum.

#### Other Contributions

Voluntary financial contributions for non-curriculum items and activities that relate to the school's functions and objectives.

#### Extra-Curricular Items and Activities

Items and activities that enhance or broaden the schooling experience of students and are above and beyond what the school provides for free to deliver the Curriculum. These are provided on a user-pays basis.

- Schools may also invite parents to supply or purchase educational items to use and own (e.g. textbooks, stationery, digital devices).



### FINANCIAL HELP FOR FAMILIES

- Schools put in place financial hardship arrangements to support families who cannot pay for items or activities so that their child doesn't miss out.
- Schools have a nominated parent payment contact person(s) that parents can have a confidential discussion with regarding financial hardship arrangements.



### SCHOOL PROCESSES

- Schools must obtain school council approval for their parent payment arrangements and publish all requests and communications for each year level on their school website for transparency.

Dear Families

You will have received information about the 2025 Voluntary School and Curriculum Contributions. To the many parents that pay these, we thank you.

### Why should I pay for the Curriculum Contributions?

It is important that families pay for the curriculum contributions as the school has arranged for all students to have access to online learning programs such as Essential Assessment and Mathletics, which are important tools for their education, a diary which aids communication between home and school and the necessary books and stationery they need to complete work in.

### Why should I pay voluntary contributions?

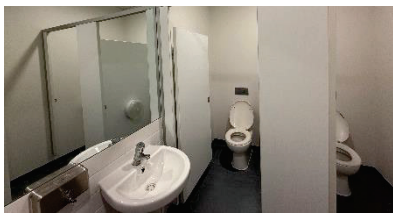
By paying these contributions, it allows the school to provide the best educational opportunities for your children and purchase items to enhance their learning.

### What has my voluntary contributions paid for?

In 2024, we have been able to spend your contributions in several ways:

#### **School Grounds Projects**

This year we have completed the construction of the new playground, toilets in the hall, new basketball court, ramps and pathways and painting inside hall.



**What we intend on doing in 2025-** New PA system that extends to the playground, POD and instrumental music room. New carpet in Year 4 and 6 classrooms, carpet in admin area.

#### **Information Technology**

In 2024, the school continued to support the initial stages of the Design Thinking curriculum to enhance student's problem-solving skills by offering coding and robotics projects and purchase digital tools to support 3D modelling and printing.

**What we need in 2025-** We aim to continue to update our fleet of devices as well as add additional shelving and storage.

#### **Bilingual Materials**

In order for our students to have the best opportunity to learn Japanese, the school has to make a lot of resources. Your contributions pay for materials to make cards, games, books and worksheets to support their bilingual learning. Our teachers and aides are working to make online books. Buying books is very expensive as they are sourced from overseas.

**What we need in 2025-** Your contributions will help us to buy more Japanese books and materials, particularly for the Year 5/6 area as we implement the 50/50 learning structure in Year 6.

#### **STEM Room**

With your contributions we have been able to purchase equipment and cooking materials for students to use in STEM specialist classes and the Science Extension Program. Elaborate.

**What we need in 2025-** We would like to purchase more robotics equipment so students can do more coding and computer

We hope all of our families are able to make some contributions in 2025, to support the high-quality education your child receives at Huntingdale Primary School.

Regards, The Parent members of School Council